

wCARMAN™

[Australian Design]

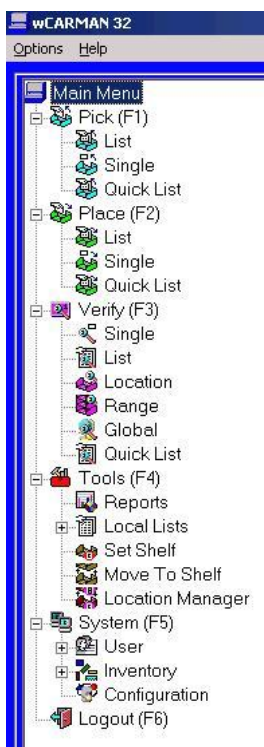
VC250 / VC500 / VC750, Shuttle NT / XP / HD

wCARMAN™ is part of our KardexIS inventory suite and is Kardex VCA's proprietary application for management of inventory stored in Kardex Vertical Storage Units. wCARMAN™ is designed and developed in Australia by our in-house software team and will run on all current Windows® operating systems. wCARMAN™ uses an ODBC compliant MS SQL database which can be implemented as a Standalone or Client / Server configuration.

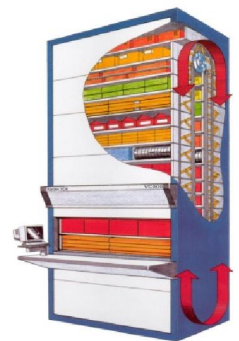
wCARMAN™ provides comprehensive functionality for managing the storage and retrieval of inventory items in both a distribution and maintenance environment.

wCARMAN™ is part of Kardex VCA's complete Inventory System 'KardexIS' which extends to management browsers, utility file and data handling, full warehouse order printing and distribution, seamless integration with Kardex VCA's SortBench™ for high throughput order picking and RackMAN™ for control of inventory held in static racking and shelving.

The following functionality is available in the standard wCARMAN™ product:











- Range of Storage (Place) method allowing transparent changeover from one mode to the other
- Range of Retrieval (Pick) methods
- Range of Stocktake (Verify) methods
- Barcode Product Identification
- Integrated Lot Number, Expiry Date Support
- Comprehensive text file based interface for data exchange and Pick Slip processing.
- Support for peripheral equipment such as Barcode Scanners, Thermal Label Printers, Integrated Weigh Scales, Remote Confirmation Buttons
- Practical Global and Cyclic Stocktake (Verify) functionality
- Range of System Reports including Stock Report, Location Report, Aged Inventory Report & Audit Report
- Customised User Profiles for operator access
- System data access via network browser tool 'Kardex IHS' – Inventory Handling System
- Support for customised functionality using system Plug-ins
- Seamless integration with Kardex VCA's PLACE to LIGHT SortBench
- Integrated PLC diagnostics
- Remote diagnostic support via Teamviewer

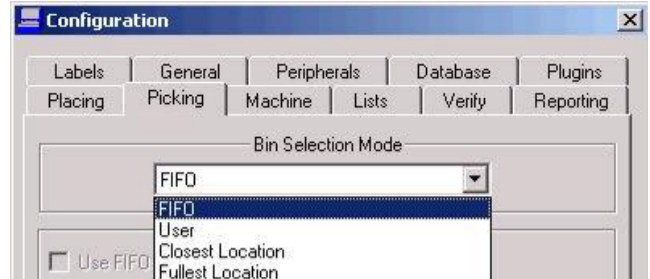





wCARMAN™ connects to your Kardex Carousel or Vertical Lift Module controller using a standard serial or network connection.

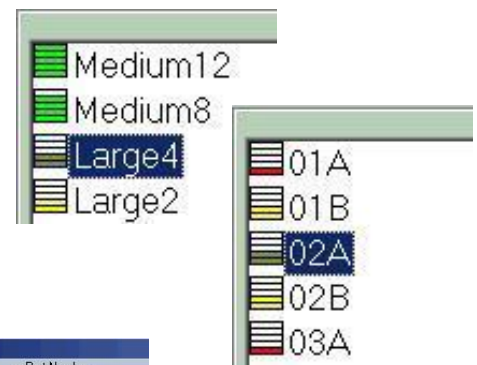
wCARMAN™ Features:





Machine Configuration

-  Enhanced PLACE methods termed Bin Allocation Mode (BAM)
 - Fixed Single
 - Dynamic
 - Fixed Multi
 - Transparent change from dynamic to fixed locations and vice versa
-  Enhanced PICK methods termed Bin Selection Mode (BSM)
 - FIFO i.e. First In First Out
 - User Selection (via location window)
 - Closest / Fullest / Satisfy Quantity
-  Integrated Lot Number and Expiry Date support
-  PICK / PLACE / VERIFY list formats can be customised to suit your process. wCARMAN™ also supports custom pass through fields which can be used to print label information or to uniquely identify list records.
-  Unique operator profiles can be defined for each user ranging from access to a single operation or all operations. All permitted high level functions are displayed to the operator on Login.
-  Automatic inventory upload / update function. Automatic database backup function.
-  Multiple label formats for PICK / PLACE / VERIFY activities
-  Standard reports including 'Stock', 'Audit', 'Free Locations', 'Shelf Usage' and 'Re-order'. Additional customised reports can be implemented as Plug-in modules. Reports can be generated on demand, on start-up or shut-down or scheduled at any time during the day.

*PLACE Operations*

-  Each bin size has a simple description such as Small, Medium or Large.
-  Only free locations are presented to the operator for selection.
-  Instant visual indication of machine location status.

*PICK Operations*

-  Pick by Single, List (Host data) or Quick List (Local Data)
-  All location and quantity data visible on one screen
-  Stock check dialogue on 'Pick to Zero' operations
-  Seamless integration with Kardex VCA's 'PLACE to LIGHT' Sortbench application for group, continuous or automatic picking.

