

Shelf Select™

[Australian Design]

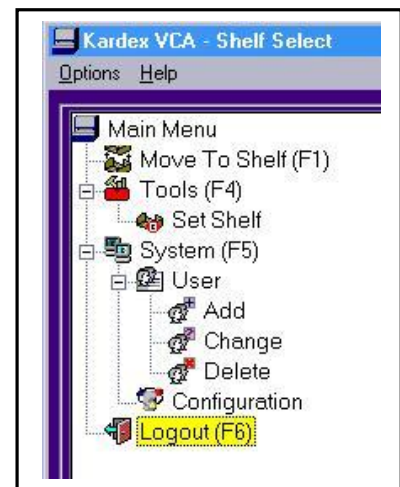
VC250 / VC500 / VC750, Shuttle NT / XP / HD

Shelf Select™ is a proprietary application for use with all Kardex vertical storage equipment to facilitate fast access to single or multiple machine shelves or trays and to provide indicators for tote bin selection. Shelf Select™ is a native Windows application and will operate under all current Windows operating systems i.e. WIN2000 and WINXP and WIN7.

Shelf Select has the same machine control as wCARMAN™, with functionality for sequential shelf selection rather than full inventory control.

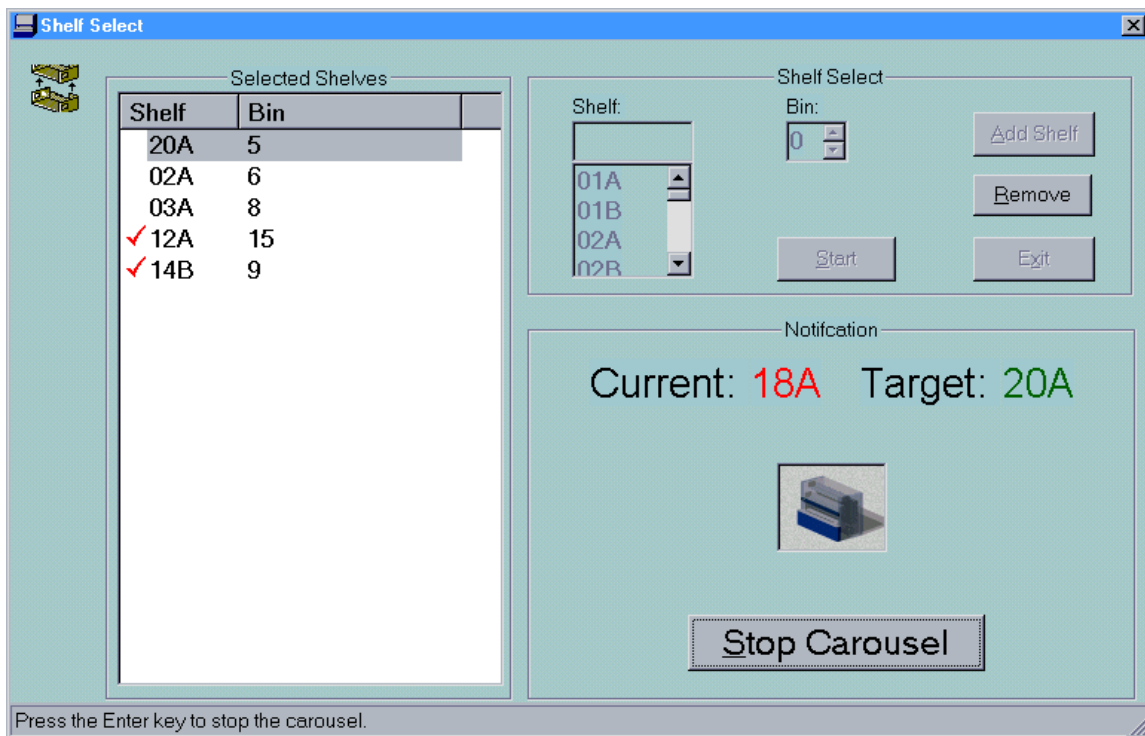
How USER Friendly is Shelf Select™?

- ☞ Most importantly Shelf Select™ has been designed for use *without* a mouse. All forms have been designed with consideration to natural process flow and all functions can be used intelligently with basic key strokes such as the Enter, Tab and arrow keys. Where machine environments are not conducive to the use of a PC mouse, Shelf Select™ can still be used quite readily.
- ☞ Functions are displayed using a collapsing tree structure similar to Windows Explorer.
- ☞ Each function has a unique ICON displayed in the tree structure and on the associated form making identification of the desired operation easy.
- ☞ All forms are colour coded for ease of identification.
- ☞ All configuration parameters including shelf configuration are managed within the Shelf Select™ application.
- ☞ No external configuration files are required, removing the possibility of errors or corruption during editing or uncontrolled shutdowns.
- ☞ Only one instance of Shelf Select™ can be loaded at any time.
- ☞ System configuration parameters can only be changed by the nominated system administrator.



Shelf Select connects to your Kardex Carousel or Shuttle™ using a standard serial connection to the machine PLC, inbuilt T3 controller or C2000 controller.

Shelf Select Features



Shelf	Bin
20A	5
02A	6
03A	8
✓ 12A	15
✓ 14B	9

Current: 18A Target: 20A

Stop Carousel

Press the Enter key to stop the carousel.

Main Form

Configuration

- ☞ Simple method of shelf configuration setup and changes.
- ☞ Unique user configuration for access to carousel operations and system functions.
- ☞ List function with Move to Shelf selectable in list order or by shortest path.
- ☞ Automatic Logout after inactivity time out.
- ☞ Selectable COM port configuration.

Operation

- ☞ List box showing all shelves available.
- ☞ Range checking on shelves and bin lamps.
- ☞ Optional entry of bin number for bin lamp indicators.
- ☞ Visit shelves in List order or by shortest rotation path.
- ☞ Screen indication that shelf has been visited.
- ☞ Carousel fault messages presented as modal dialogs.

